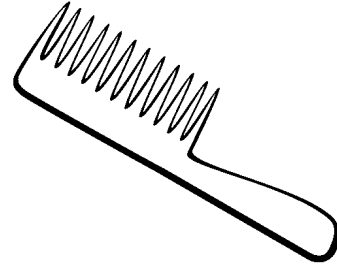


Name:



Partner reading

“Lili” - Locomotion (p. 9)



Read the poem “Lili” silently to yourself.

Look for:

- connections to the poem “Mama,” which you read in Guided Reading
- things Lonnie remembers about his sister Lili



Find a line that shows how Lonnie feels about his little sister. Write the line you chose below.



Turn and read your line to your partner.

Did you pick the same lines or different ones?

- We chose the same line about Lili
- We chose different lines

Make a check in the boxes below when you finish:

- I read my line
- My partner read his/her line



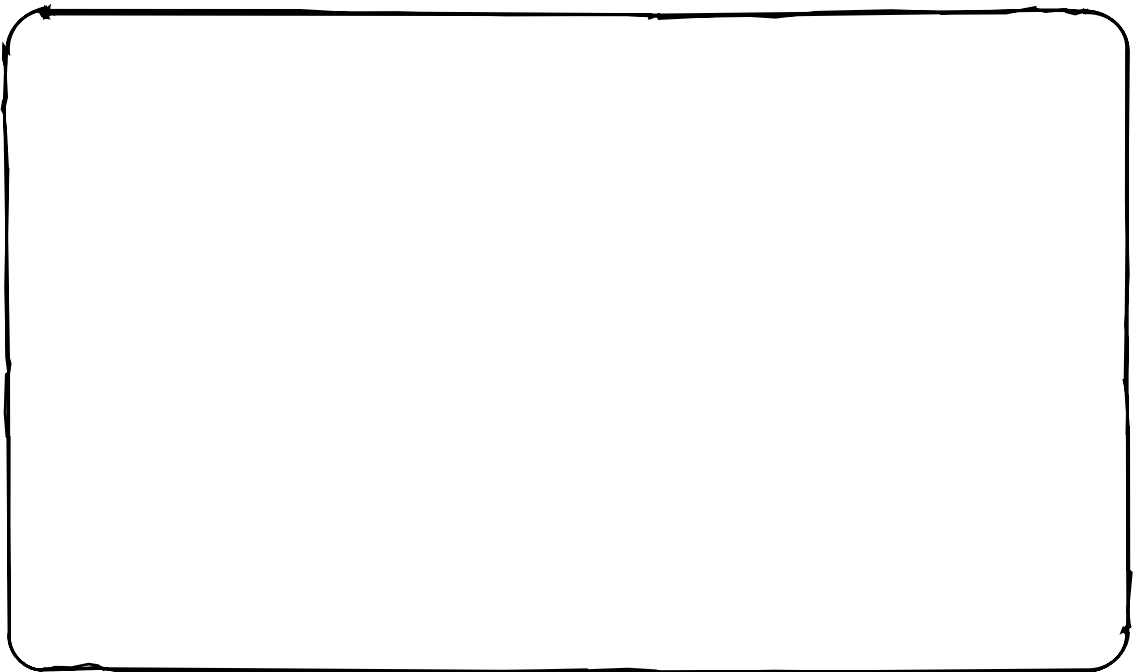
Partner reading

“First” - Locomotion (pp. 10–11)



You’re going to read about Lonnie’s new foster home. Read the first two stanzas of the poem “First” silently to yourself (up to “Grown-up and gone now”).

→ Draw the room that Lonnie is going to sleep in at Miss Edna’s. Use words from the poem to label what’s in his new room.



Now read the rest of the poem silently on your own.



With your partner, re-read from “I used to fill Miss Edna’s house with noise” to the end of the poem.

One partner will read the *italicized words* (*Miss Edna’s lines*).

The **other partner** will read the rest of the words (Lonnie’s lines).

Turn and talk to your partner.

→ Why is Lonnie so quiet now?

Partner reading, continued

Make a prediction:

Will Lonnie have a good new home at Miss Edna's?

- yes
- no
- maybe

Back up your prediction:



Re-read pages 10-11.



Find details of what Lonnie saw and heard the first day at Miss Edna's.

Lonnie saw and heard

This page intentionally left blank for printing purposes.